

Fully featured ultra short throw LCD projector with network capabilities and a low operating cost all in a portable design.



Key Features

- XGA 1024 x 768 resolution
- 3,500 ANSI lumens white/color output
- 4000:1 contrast ratio
- 4,000 hours hybrid filter*
- 2,500 hours lamp life (Standard mode) and 4,000 hours lamp life (Eco mode)**
- ImageCare Technology for energy savings
- Embedded LAN/Wireless Compatible
- Projector Quick Connection iOS App

1.800.HITACHI
dmd.info@hal.hitachi.com
hitachi-america.us/projectors



Hitachi's CP-A352WN ultra short throw LCD projector combines an array of advanced features in a compact, portable design perfectly suited for classrooms of any size. Small in size, but big on performance, the CP-A352WN provides vibrant image quality, cost-effective operation, and long-lasting reliability. The CP-A352WN incorporates a cloning function which enables you to copy configuration settings from one projector to others of the same model via USB memory. Plus, Hitachi's Intelligent Eco Mode with ImageCare combines optimal picture performance with energy savings for a lower total cost of ownership. For added peace of mind, Hitachi's CP-A352WN is also backed by a generous warranty and our world-class service and support programs.

CP-A352WN



UNIQUE FEATURES

Drawing Function with Optional Tablet (TB-1)



The optional Hitachi wireless tablet and pen allows you to engage your audience by annotating over images shown on the projector.

Cloning Function



Copy configuration settings from one projector to others of the same model via USB memory. Cloning can save almost all PJ settings such as gamma and keystone via USB memory.

ImageCare Technology



ImageCare is a lamp power control function that combines optimal picture performance with maximum energy savings by decreasing energy usage, improving contrast ratio and lengthening lamp life. The result is a lower total cost of ownership and decreased maintenance cost.

Intelligent Eco and Saver Modes



Automatically changes the brightness of the lamp according to the brightness level of the screen. Also, automatically changes the brightness of the lamp if there is no change in the screen image. Using ImageCare technology, these features give optimal picture performance with maximum energy savings.

Projector Quick Connection iOS App



Our iOS application offers simple control options which include sending photo and document files and web site contents to the projector. Available for iPad® and iPhone® devices.

Tabletop Presentation



Make any tabletop a projection screen using the optional tabletop stand. Ideal for a small group environment or in a room with limited space.

STANDARD FEATURES

Display via USB



Simply plug and play using the USB port instead of the 15-pin D-sub VGA cable.

Input Source Naming



Users can rename input sources in more descriptive terms instead of the factory default names. **Exclusive to Hitachi.**

Microphone Input



A microphone can be used via the jack located on the input panel. Allows for more dynamic presentations even in standby mode.

Network Control, Maintenance and Security



Embedded networking gives you the ability to manage and control multiple projectors over your LAN. Features include scheduling of events, centralized reporting, image transfer and e-mail alerts for reactive and routine maintenance.



PC-Less Presentation



By using a USB memory stick or other storage device, you can use the projector without a computer. Menus are easy to see with a thumbnail display. Additionally there is also a slideshow function.

PIN Lock / MyScreen / MyText



PIN lock protection can limit projector users. MyScreen PIN lock keeps captured images on the startup screen. Users can set any name logo to MyScreen, clearly identifying ownership. MyText provides the ability to write text on the startup screen such as model name, serial number or location.

PJMessenger



PJMessenger function allows you to send and display text messages and audio alerts on your networked projectors. It is an easy and efficient way to send announcements out to multiple units.

Present Content via LAN



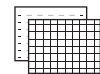
Hitachi's suite of networking software allows you to easily send content directly from your PC to the projector via your LAN connection.

Serial Number and Media Access Control Label



A label is affixed to the front of the projector to more easily access and read the model name and serial number while mounted in ceiling use. This is a convenience for installers, end user and auditors for instant accessibility.

Template Function



Line templates in the projector menu can help when writing on a whiteboard. There are four types of line templates to choose from.

Wireless Presentation Compatible



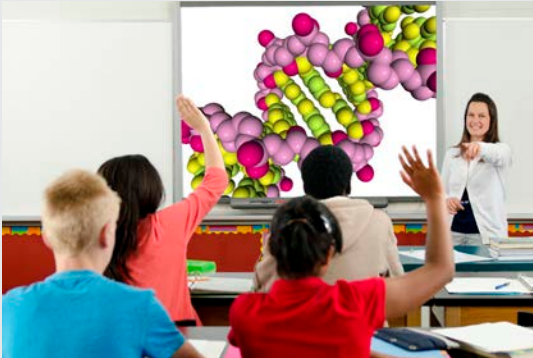
Connect the projector to a computer or your network using the optional USB wireless adapter (part number USBWL11N). The adapter supports IEEE802.11b/g and the latest 11n.

CP-A352WN LCD Projector

HITACHI
Inspire the Next

Enhance the educational experience with Hitachi's CP-A352WN.

The CP-A352WN ultra short throw LCD projector from Hitachi is specifically designed to enhance the educational experience – for students and teachers. Leading edge projector technology helps stimulate the imagination of students of all ages and makes lessons become more interesting, compelling and memorable. Vivid colors. Bold graphics. Crisp text.



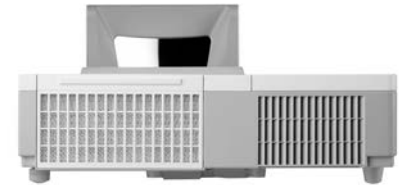
The CP-A352WN does it all in classrooms of all sizes. With 3,500 ANSI lumens brightness and XGA 1024 x 768 resolution, the CP-A352WN provides the perfect solution. It also features a high contrast ratio, long lamp life, cloning function enabling you to copy configuration settings from one projector to others of the same model, and is wireless presentation ready. Plus, embedded networking gives you the ability to manage and control multiple projectors over your LAN (scheduling of events, centralized reporting, image transfer, and email alerts). Best of all, the high performance CP-A352WN is exceptionally reliable and offers a lower cost of ownership.



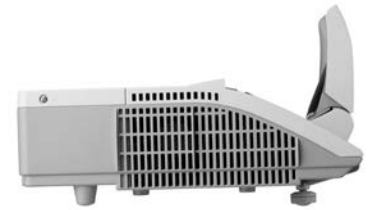
Front 3/4 View



Top View



Rear View

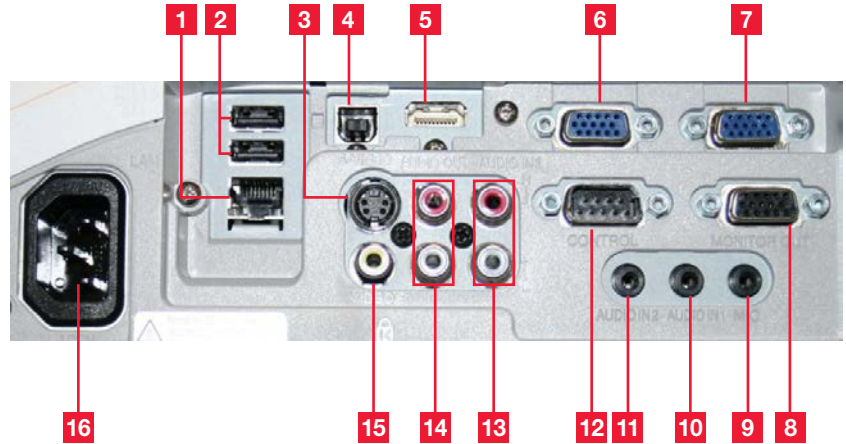


Right Side Profile



Ultra Short Throw Series

Input/Outputs



- | | | |
|-------------------|---------------------|-----------------------|
| 1. LAN | 6. Computer in 2 | 12. Control (RS-232C) |
| 2. USB Type A x 2 | 7. Computer in 1 | 13. Audio in 3 |
| 3. S-Video | 8. Monitor Out | 14. Audio Out |
| 4. USB Type B | 9. Microphone Input | 15. Composite Video |
| 5. HDMI | 10. Audio in 1 | 16. AC In |
| | 11. Audio in 2 | |



3LCD Technology



Closed Captioning



Crestron Integrated Partner



AMX Device Discovery



Hitachi Trade-Up Program



3 Year Warranty

HDMI HDMI

HI0148-Rev. 1- 04/13-WEB
All specifications subject to change without notice.
3LCD and the 3LCD logo are registered trademarks of the Seiko Epson Corporation.
iPad and iPhone are registered trademarks of Apple Inc., registered in the U.S. and other countries.
©2013 Hitachi America, Ltd. All Rights Reserved.

Hitachi America, Ltd.

900 Hitachi Way, Chula Vista, CA 91914
Toll Free: 1.800.HITACHI • Email: dmd.info@hal.hitachi.com
Web: hitachi-america.us/projectors

CP-A352WN



Accessories and Lenses

Supplied Accessories	Remote control, power cord, computer cable, user's manual, network manual
Optional Accessories	UST1WALLARM, A3WALLARM, TT-251 tabletop stand, USBWL11N - USB wireless adapter

Replacement Parts

Lamp	DT01411
Remote Control	HL02882
Filter	UX37191

Projection Throw Chart (In inches)

Screen Size	4:3		Throw Distance	
	Diagonal	Distance from leading edge of projector to screen	Distance from mirror to screen	
60		3.8	15.9	
70		6.3	18.4	
80		8.9	20.9	
90		11.4	23.4	
100		13.9	26.0	

Throw Ratio: (distance : width)
 0.1 : 1 from edge of projector
 0.3 : 1 from mirror

Specifications

Display	Projection Technology	3LCD, 3 chip technology
	Resolution	XGA - 1024 x 768
	White Light Output	3,500 ANSI lumens
	Color Light Output	3,500 ANSI lumens
	Colors	16.7 million colors
	Aspect Ratio	Native 4:3 / 16:9 and 16:10 compatible
Lens & Operation	Contrast Ratio	4000 : 1 (using active IRIS)
	Throw Ratio (distance : width)	0.1 : 1 from edge of projector to screen 0.3 : 1 from mirror to screen
	Lens	F = 1.8, f = 4.1 mm
	Lamp Wattage	215W
	Expected Lamp Life*	Approximately 2,500 hours (standard mode) 4,000 hours (Eco mode)
	Expected Filter Life**	Approximately 4,000 hours
Compatibility	Speaker Output	16W
	Acoustic Noise Level	37 dB (30 dB in Eco mode)
	Keystone	H and V: +/- 5°
	Computer	VGA, SVGA, XGA, WXGA, WXGA+/SXGA/WSXGA+/UXGA (compressed), MAC 16"
	H-Sync	31.5 kHz - 106 kHz
	V-Sync	56 Hz - 120 Hz
Connectors	Composite Video	NTSC, NTSC4.43, PAL, PAL-M, -N, SECAM
	Component Video	480i, 480p, 576i, 720p, 1080i, 1080p
	HDMI	480i, 480p, 576i, 720p, 1080i, 1080p, computer signal TMDS clock 27 MHz - 150 MHz
	Digital Input	HDMI x 1 (HDCP compliant)
	Computer Input 1	15-pin mini D-sub x 1
	Computer Input 2	15-pin mini D-sub x 1
Ratings & Warranty	Computer Monitor Output	15-pin mini D-sub x 1
	Video Input	
	S-Video	Mini DIN 4-pin x 1
	Composite Video	RCA jack x 1
	Component Video	15-pin mini D-sub x 2, (shared with computer in 1/2)
	Audio Input	3.5 mm stereo mini jack x 2, RCA jack (L/R) x 1, MIC-in 3.5 mm mini jack x 1
Connectors	Audio Output	RCA jack (L/R) x 1
	Network LAN Wired	RJ-45 port (10 base-T / 100 base-TX)
	Network LAN Wireless	USB-A, IEEE802.11 b/g/n - optional wireless adapter required
	USB	Type A x 2 (PC-less presentation, wireless adapter) Type B x 1 (USB display or mouse control)
	Control Terminals	9-pin mini D-sub x 1 (RS-232 control)
	Ratings & Warranty	Power Supply
Power Consumption		370W
Operating Temperature		32°F - 104°F (0°C - 40°C)
Dimensions (W x D x H)		13.6" x 11.9" x 3.4" (excl. protruding parts)
Weight		approx. 8.4 lbs
Approvals		UL 60950-1 / cUL FCC Part 15 subpart B Class B
Ratings & Warranty	Warranty	3 year limited parts and labor. Extended Service Contract available (additional cost)



* Actual lamp life will vary by individual lamp and based on environmental conditions, selected operating mode, user settings and usage. Hours of average lamp life specified are not guaranteed and do not constitute part of the product or lamp warranty. Lamp brightness decreases over time.
 ** Actual filter life will vary by individual filter and based on environmental conditions, selected operating mode, user settings and usage. Hours of average filter life specified are not guaranteed and do not constitute part of the product warranty.

CP-A352WN

