

BARCOGRAPHICS 9300

Ultra-High Brightness, High Resolution Digital Light Cannon Projector

The BARCOGRAPHICS 9300 combines very high light output and exceptional resolution with advanced signal processing to deliver a remarkable breakthrough in performance for large screen video and graphics applications. Equipped with high aperture XGA panels and an 1800 watt high efficiency illumination system, the unit delivers a powerful 8,000 lumens of light output. The BARCOGRAPHICS 9300 is ideally suited for the most diverse applications ranging from auditoriums and conference room presentations to trade shows and rental & staging applications.

Versatile Source Compatibility

Get ready for the digital age with the new BARCOGRAPHICS 9300. The unit's wide source compatibility enables it to link up with most current digital and analog video and data sources:

- Video sources: VHS, S-VHS, Component (Y, R-Y, B-Y) and RGB format
- DVD, satellite receiver and laserdisc
- Computers and workstations with a resolution of up to 1,280 x 1,024 pixels
- Optional Serial Digital Input (SDI/4:2:2)

Exceptional Video and Graphics Performance

The unique combination of unprecedented video and graphics image quality from one projector is achieved through a number of advanced features:

- High light output of 8,000 lumen full white
- Three active matrix 5,8" high aperture XGA LCD panels with a resolution of 1,024 x 768 pixels
- Powerful 1800 Watts metal-halide lamp
- BARCO's advanced TCR^{Plus} feature processes conventional video sources and transforms them into brilliant images with vibrant colors and amazing color depth
- BARCO's Patented Pixel Map Processor guarantees very legible characters and the greatest amount of picture detail possible



BARCO

TCR
True Color Reproduction

motorized
MCA
convergence

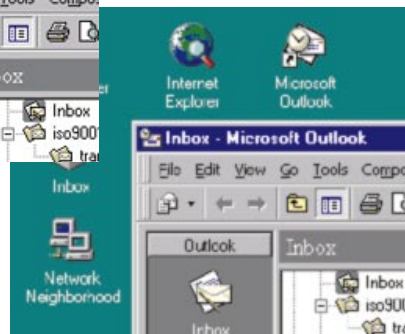
TCR^{Plus} – The Power to Reinforce Color and Detail



BARCO's TCR^{Plus} Technology incorporates the True Color Reproduction feature which provides true-to-life colorimetry and superior color uniformity over the entire screen, perfect color tracking and superb gamma correction, as well as a large number of image enhancement tools. The result: graphics that really stand out and video images that seem to jump right off the screen!



Sharper Picture Display
State-of-the-art processing algorithms drastically improve both sharpness and detail for high-resolution graphics and video images.



Dynamic Color Depth
Superior picture performance is achieved with any source by analyzing, grading and controlling the color contrast of each image pixel in real-time.



Noise Reduction
An advanced Digital Noise Reduction System reduces noise in video pictures and increases stability of graphics images without incurring motion artifacts.

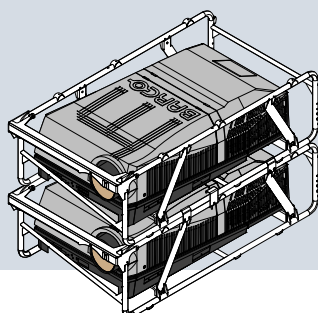
Ready for the Road

A wide range of special features and accessories make the projector ideally suited for Rental and Staging applications:

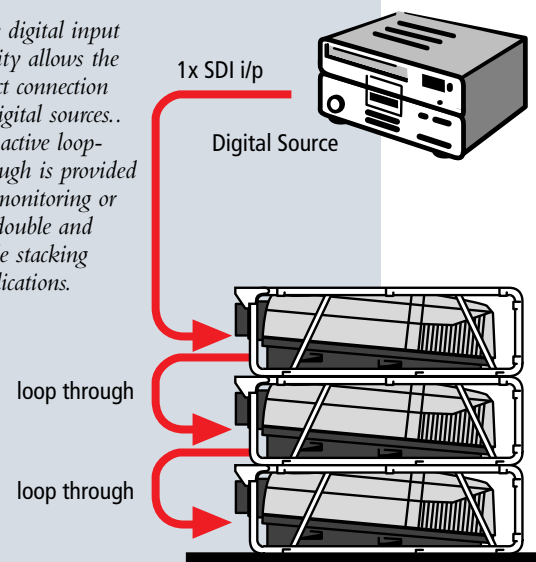


BARCO's MOCA (Motorized Convergence Adjustment System) was designed especially for special applications such as On-axis or Dual/Triple projection. MOCA allows precise convergence adjustments on the projected image by means of an Infrared Remote Control.

BARCOGRAPHICS 9300 projectors can be mounted and suspended in a rugged, but lightweight frame. Additional fixation points are provided for rigging safety chains. Powerful features such as an adjustable lens holder, an SDI input and BARCO's Windows Control Software offer further flexibility.



The digital input facility allows the direct connection of digital sources.. An active loop-through is provided for monitoring or for double and triple stacking applications.



Technical Specifications

Light Output

8,000 lumen full white
7,000 ANSI lumen
Brightness uniformity:
> 80% for the total screen area

LCD Panels

3 active matrix high aperture XGA LCD panels (5.8" diagonal), with a resolution of 1,024 x 768 pixels, with an overall resolution of nearly 2.4 million pixels. LCD panels are selected for a minimum of pixel defects⁽¹⁾

Lamp

1800 Watt metal-halide lamp
Typical lifetime: 1,000 hours with a brightness maintenance of 80 %

Available Lenses

- Fixed focal length lenses are available with a throw ratio of 1.2, 2.2, 3.3, 4.0, 5.0 or 7.0:1.
- Variable focus lenses:
 - throw distance= 1.5 - 3 times the screen width
 - throw distance= 3 - 5.3 times the screen width
- Anamorphic lens with a throw ratio of 3.5:1 (16:9 aspect ratio)
- Lens with a very short throw ratio of 0.9:1, for on-axis projection applications
- Ultra-high resolution QHD lenses are available

Lens Type	Order No.
QHD (1.2:1)	R9829760
QHD (2.2:1)	R9829770
QHD (4:1)	R9829080
QHD (1.5-3:1) (zoom)	R9829780
HD (1.2:1)	R9829200
HD (2.2:1)	R9829060
HD (3.3:1)	R9829075
HD (5:1)	R9829180
HD (7:1)	R9829090
HD (1.5-3:1) (zoom)	R9829150
HD (3-5.3:1) (zoom)	R9829190
WHD (3.5:1) (anamorphic)	R9829320
HD (0.9:1) ⁽²⁾	R9829550

Screen Sizes

Min.: 3.3' x 2.5' / 1 m x 0.75 m
Max.: 50.0' x 37.5' / 15 m x 11.25 m

Contrast Ratio

>250:1 (on 5x4 B/W checkerboard)
>500:1 (full white/full black)

Remote Control

All controls are accessible through a soft-touch panel, a user-friendly backlit infrared remote control or BARCO's Windows Control Software

- Source switching
- User settings per source
- Installation and service adjustments

Inputs

Built-in input facilities:

- RGB analog input with standard sync (BNC connectors), sync on green or separate sync
- Multifunctional 5-Cable input for the connection of
 - RGB analog signals with standard sync (BNC connectors) or tri-level sync, sync on green or separate sync
 - Standard Video signals
 - S-VHS signals
- RS-232 loop-through input (D9-connector) for PC based projector control
- Communication input (D9-connector) for peripherals
- Optional SDI input (Serial Digital Input)

Furthermore, the projector has two modular inputs. Five different types of input modules are available:

- Video/S-Video Input: Video on BNC, S-Video on 4-pin mini-DIN connector
- Component Video Input (Y, R-Y, B-Y, S) on 4 BNC connectors
- RGB analog input with standard sync (BNC connectors), sync on green or separate sync
- RGB analog input with tri-level sync (BNC connectors), sync on green or separate sync
- 5-Cable input

Input Modules	Order No.
Video/S-Video	R9827900
RGB analog (standard sync)	R9827910
RGB analog (tri-level sync)	R9827920
Component Video	R9827930
5-Cable Input	R9828660
SDI	R9829820

Compatibility

The BARCOGRAPHICS 9300 is compatible with:

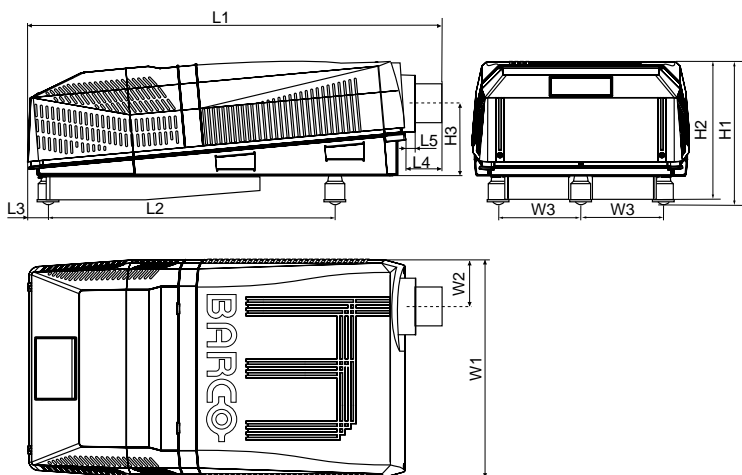
- All current video sources (PAL, SECAM, NTSC 3.58, NTSC 4.43) in Composite, S-VHS, RGB or Component or digital formats
- All currently proposed HDTV, extended and improved television standards (Eureka 95, Hi-Vision, ACTV, IDTV, EDTV,...)
- All computer graphics formats from VGA (640x480), S-VGA (800x600), XGA (1,024x768) up to S-XGA (1,280x 1,024 pixels)
- Most Macintosh computers
- Electronic workstations with a resolution up to 1,280 x 1,024 pixels
- Most sources with a pixel clock <135 MHz

Special Features

- Built-in MOCA motorized convergence adjustments via remote control
- Built-in Adjustable Lens Holder ideal for dual and triple stacked configurations
- Extensive geometry adjustments (Image Size, Shift, Keystone,...), also addressable through RS-232 communication port
- Built-in Freeze function
- Internal test patterns (crosshatch, color bars, greyscale,...)
- External auto-diagnostics with 2 x 7 segment LED display
- Built-in help menus
- Intuitive on-screen display: Installation and service screens, barscale display of user settings, on-screen display of selected source
- Adjustable leveling feet
- Calibrated color temperature selections (3200K, 5400K, 6500K, 9300K or custom)
- Optional light shutter blanks image when paused
- An optional multifunctional frame facilitates carrying the projector and protects it against impacts. It also allows quick and easy set-up of the projector for Dual or Triple stacked applications
- PC Control possible with BARCO's Windows Communication Software

(1) Further information is available on request.

(2) Requires an On-Axis kit p.n. R769886K



Dimensions	inch	mm
L1 ⁽⁴⁾	47.60-49.57	1,209-1,259
L2	27.64	702
L3	1.65	42
L4 ⁽⁴⁾	4.33-6.30	110-160
L5	1.06	27
W1	24.80	630
W2	5.31	135
W3	11.18	284
H1	16.61	422
H2	15.71	399
H3	8.23	209

Shipping Dimensions	inch	mm
L	53.15	1,350
W	24.80	950
H	26.77	680

Safety Regulations

The BARCOGRAPHICS 9300 complies with UL1950 and EN60950

Electromagnetic Interference

The BARCOGRAPHICS 9300 complies with FCC Rules & Regulations, part 15 Class A and CE EN55022 Class A

Warm-up Time

Less than 3 minutes to meet full specifications

AC Power

Power factor pre-regulated SMPS, 240 VAC ±10%/50-60 Hz

Power Consumption

Max. 2,300 Watts [230 VAC/10 A]
Dissipation: Max. 7,900 BTU/hr

Weight⁽³⁾

Net weight 207 lbs./ 94 kg
Shipping weight 273 lbs./ 124 kg

Accessories Included

- Infrared Remote Control
- Owner's & Installation Manual
- Power Cord with CEE (7) VII Plug

Order Information

BARCOGRAPHICS 9300⁽³⁾ R9001541

BARCOGRAPHICS 9300⁽³⁾ with MOCA R9001540

RCVDS 05 Source Selector

230 V R9827880

120 V R9827889

Remote Infrared Receiver

R9827515

Windows Communication

Software R9829670

Multifunctional Frame R9829651

Vertical Mirror for

Multifunctional Frame R9829680

Flight Case for projector

+ Frame R9829720

Ceiling Mount 5/8/9000

• With Pulley System R9829620

• Without Pulley System R9829621

1800 W Metal-Halide Lamp

R9829715

Service Tool Kit R9829241

Light Shutter R9829270

(3) Without lens or modular inputs. Lenses and modular inputs are sold separately.

(4) With QHD(4.0:1) lens. Dimensions for other lenses are available on a separate data sheet



BARCO Projection Systems is an ISO9001 registered company.

The information and data given are typical for the equipment described. However any individual item is subject to change without any notice.



BARCO Projection Systems Head Office
Noordlaan 5 8520 Kuurne, Belgium
Tel: +32 56 36 82 11
Fax: +32 56 35 16 51
E-mail: sales.bps@barco.com
Visit BARCO at the web: <http://www.barco.com>

BARCO