

SONY®

Data Projector
VPL-PX15/PX11

Portable, High-quality Projectors that Achieve New Levels of
Presentation Flexibility.



ProSelecta

View :: Compare :: Select - www.ProSelecta.com



Sony introduces two attractively-styled, compact projectors that offer an outstanding combination of press-and-play performance and ease of use.

The VPL-PX15 and VPL-PX11 are powerful portable projectors from Sony that provide excellent resolution and brightness, as well as great flexibility. The VPL-PX15 and VPL-PX11 provide an outstanding brightness of 2000 ANSI lumens with true XGA resolution for brilliant image reproduction.

With the VPL-PX15, Sony brings networking capability to portable projectors – it is the first projector from Sony to provide wireless Peer-to-peer (Ad-hoc) networking, offering a whole new style for smart, cable-free meetings in your organization.

The VPL-PX11 includes an Off & Go function that allows the cooling fan to operate for a certain period of time after its power has been switched off. This means that, even when the projector is turned off and immediately moved to a new location, it continues to benefit from internal cooling.

The VPL-PX11 also provides powerful stereo speakers (2W + 2W) so that audio can be added to presentations when required.

These new Data Projectors are ideal for use in A/V presentations and as a valuable lecture tool. Their flexibility and ease of operation makes them especially attractive to organizations where they are used in a variety of applications and operated by many different people.

High Brightness and Resolution

The VPL-PX15 and VPL-PX11 combine the latest LCD-panel technology with a 200 W UHP lamp to provide an outstanding combination of on-screen image quality and brightness. Both models feature three 0.9-inch LCD panels, providing a light output of 2000 ANSI lumens with true XGA (1024 X 768) resolution. High-quality images can be projected even in conditions of high ambient light.

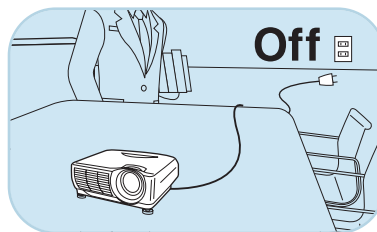


Sophisticated Design

Your audience will be impressed by the sleek and elegant looks of these models that add style to all your presentations. A built-in height adjuster provides the optimum projection angle, and projector noise is not a distraction – these projectors run very quiet. The exhaust is positioned on the front of the unit so that the discharged air is kept away from the audience.

Off & Go function

The VPL-PX11 incorporates a built-in circuit that activates its cooling fan after the power supply is shut off. With this function, the power cable can be disconnected as soon as your class is over, without waiting for the cooling fan to stop.



Stereo Speakers

Both the VPL-PX11 and the VPL-PX15 are equipped with speakers to enhance the effectiveness of presentations by adding stereo audio. These are 2 W +2 W for the VPL-PX11.



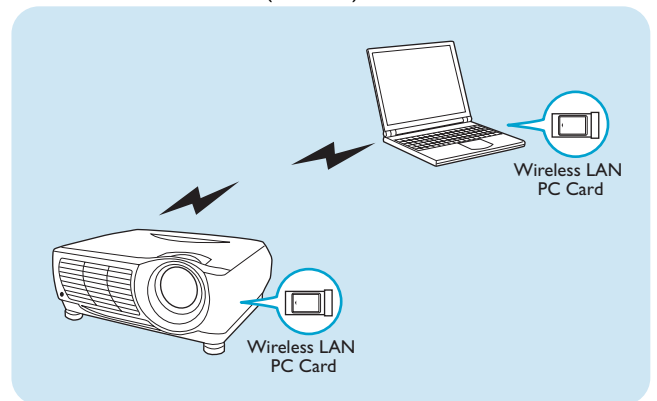
Innovative Presentations with Network Projector VPL-PX15



Wireless Peer to Peer (Ad-hoc) Presentations

The VPL-PX15 is the first Sony projector to include a wireless Peer to Peer (Ad-hoc) networking capability. Where a network environment is not provided, this technology enables a wireless Peer to Peer network to be set up using a wireless LAN PC Card. This revolutionary application means that users can come to a meeting, set up a Peer to Peer network with their PCs and the projector, and run their presentations by communicating with and transferring data to the VPL-PX15. By eliminating the need for cable connections between PC and projector, this development makes an important contribution to smooth running presentations.

Wireless Peer to Peer (Ad-hoc)



Easy Maintenance Access

The network connection allows users to monitor and control multiple projectors in one system. As long as the PC used is within the network environment, maintenance can be carried out centrally from virtually any location.

• Information access via a web browser

Using a web browser, users can check the current status and version information of the projector from any PC on the same network.



• e-Mail reports

The automatic e-mail service sends regular status reports (including lamp life, maintenance scheduling, etc) and error reports to the designated recipient.

• Remote projector control

In addition to remote control using the RS-232C interface, the VPL-PX15 can also be built into various network-based control systems using an ethernet connection.

• SNMP support

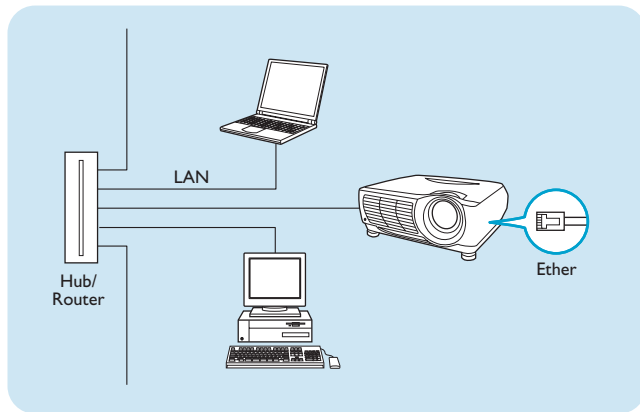
The VPL-PX15 complies with the Simple Network Management Protocol (SNMP).

LAN Connection

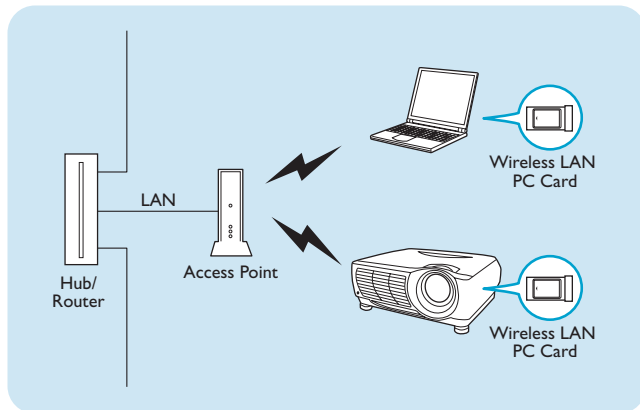
In offices with a network environment, the VPL-PX15 projector can connect to the LAN via a built-in 10Base-T/100Base-TX interface and then communicate with any PC on the LAN. The projector can also access the internet directly using the pre-installed web-browser. A wireless infrastructure can also be provided with the use of a wireless LAN PC Card and an access point*.

* Recommended LAN PC Card, Wireless LAN PC Card, PC Memory Card and access point may vary by area. For details, please contact your nearest Sony Display Dealer.

Wired



Wireless Infrastructure



PC Presentations via Web Browser

Any PC within the same network can communicate with a VPL-PX15 via a web browser*. Operating presentations, organizing files and controlling both a projector's functions and its setup parameters can all be done by accessing the application software pre-installed in the projector from a PC on the network.

* System requirements

OS: Microsoft® Windows® 98, Windows 98 SE, Windows Me or Windows 2000

Web browser: Internet Explorer 4.0 or later or Netscape® Communicator 4.5x or 4.7x

PC-less Presentations with Projector

Alternatively, it isn't necessary to use a PC to give presentations:

- **Present from local user memory**

The VPL-PX15 has approximate 40 Mbytes of storage as a free area to which users may upload presentations.

- **Remote Desktop function**

The VPL-PX15 supports the Remote Desktop feature, which allows it to access any data or application stored on a networked PC running Windows XP Professional.

- **PC Card presentations**

Presentation files can also be projected directly by inserting the PC Memory Card into the PC Card slot.



* The PC Memory Card is not supplied with the VPL-PX15.

Application Software for Presentation Control

The VPL-PX15 is provided with Sony original Presentation Viewer, Image Viewer and File Manager application software. The Presentation Viewer* enables users to prepare and run PowerPoint (PPT), Excel (XLS) and Word (DOC) presentation files, while the Image Viewer makes it possible to view JPEG, GIF, BMP and PNG images. Presentation files in the projector memory can also be added or deleted using the File Manager.



* Some functions with which original files are equipped cannot work because the Presentation Viewer is a basic viewer.

Flexible Use

Portability

The VPL-PX15 and VPL-PX11 are compact and easy to carry with their retractable carrying handle. They are easily moved around from room to room, bringing bright and clear images anywhere they are used.



Installation Flexibility

The VPL-PX15 and VPL-PX11 can be floor mounted, or ceiling mounted in applications where a fixed installation is more appropriate. New optional converter lenses are available which can be easily attached to the standard lens. They enable the projector to be customised to virtually any application environment.

VPLL-CW10



Short focal length converter lens.
Throwing distance^{*1}: about x 0.78 (60-300")

VPLL-CT10



Long focal length converter lens.
Throwing distance^{*2}: about x 1.28 (40-100")

^{*1} Ratio of the lens throwing distance to that of the standard lens.

^{*2} Standard lens should be set to its maximum when using the VPLL-CT10.



Other Features

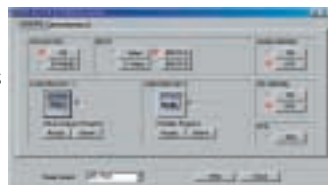
Flexible Inputs

The VPL-PX15 and VPL-PX11 accept a wide variety of input signals, including composite video, S-video and RGB, as well as computer signals up to SXGA resolution. And with presets for 37 different signals, images can be reproduced in the most suitable signal mode.

In addition the VPL-PX11 is equipped with an RS-232C interface connector and output connectors for RGB and the selected audio input.

USB Compatibility and Projector Station Software

The VPL-PX15 and VPL-PX11 are USB-ready. With their USB connection, these projectors can be controlled by a computer running Projector Station* USB application software. This software also helps you organize your presentation materials for quick access by enabling files to be opened with a single push of the function keys on the remote control unit.



* Projector Station requirements: Microsoft Windows 98, Windows 98 SE, Windows ME or Windows 2000 operating system.

Useful Remote Control Unit

The VPL-PX15 is supplied with a laser pointer-equipped remote control unit. The VPL-PX11 is supplied with the dedicated remote control unit. Both these wireless control units include items such as a Mouse function, Digital Zoom function and Freeze function. Presentations assigned in the Projector Station software can be opened with the push of the function key. Also, when the VPL-PX15 is in NETWORK mode, the Function keys on the remote control unit work as easy startup keys for the projector's network functions.



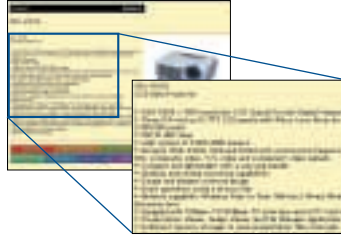
Remote Control Unit for VPL-PX15



Remote Control Unit for VPL-PX11

4-times Digital Zoom

Any part of the projected image can be zoomed in during a presentation, using the supplied remote control unit.



Freeze

The Freeze function displays a freeze-frame while preparing or switching to the next image. This can be controlled via the supplied remote control unit.

APA (Auto Pixel Alignment)

With APA, a single-button "press and play" operation correctly sizes and adjusts the display for optimum picture performance.

Digital Keystone Adjustment

Keystone distortion of up to ± 15 degrees can be digitally corrected from the On-screen Display or the supplied remote control unit. Images can be projected with the correct geometry even where installation space is limited.



On-Screen Display

The OSD for projector control is available in nine languages: English, French, Spanish, German, Italian, Portuguese, Japanese, Chinese and Korean.

Input Signal Preset Data

No.	Resolution	fH (kHz)	fV (Hz)	H/V	
1	Video 60 Hz	15.734	59.940	N/N	
2	Video 50 Hz	15.625	50.000	N/N	
3	15 K RGB/Component 60 Hz	15.734	59.940	SonG	
4	15 K RGB/Component 50 Hz	15.625	50.000	SonG	
6	640x350	VGA-1	31.469	70.086	P/N
7		VGA VESA 85	37.861	85.080	P/N
8	640x400	NEC PC98	24.823	56.416	N/N
9		VGA-2/VESA 70	31.469	70.086	N/P
10		VGA VESA 85	37.861	85.080	N/P
11	640x480	VGA VESA 60	31.469	59.940	N/N
12		Mac 13	35.000	66.667	SonG
13		VGA VESA 72	37.861	72.809	N/N
14		VGA VESA 75	37.500	75.000	N/N
15		VGA VESA 85	43.269	85.008	N/N
16	800x600	SVGA VESA 56	35.156	56.250	P/P
17		SVGA VESA 60	37.879	60.317	P/P
18		SVGA VESA 72	48.077	72.188	P/P
19		SVGA VESA 75	46.875	75.000	P/P
20		SVGA VESA 85	53.674	85.061	P/P
21	832x624	Mac 16	49.724	74.550	N/N
22	1024x768	XGA VESA 43	35.524	86.958 ^{*1}	P/P
23		XGA VESA 60	48.363	60.004	N/N
24		XGA VESA 70	56.476	69.955	N/N
25		XGA VESA 75	60.023	75.029	P/P
26		XGA VESA 85	68.677	84.997	P/P
27	1152x864	SXGA VESA 70	63.995	70.019	P/P
28		SXGA VESA 75	67.500	75.000	P/P
29		SXGA VESA 85	77.487	85.057	P/P
30	1152x900	SUN LO	61.795	65.960	N/N
31		SUN HI	71.713	76.047	C/Neg
32	1280x960	SXGA VESA 60	60.000	60.000	P/P
33		SXGA VESA 75	75.000	75.000	P/P
34	1280x1024	SXGA VESA 43	46.433	86.872 ^{*1}	P/P
35		SGI-5	53.316	50.062	SonG
36		SXGA VESA 60	63.974	60.013	P/P
37		SXGA VESA 75	79.976	75.025	P/P
38		SXGA VESA 85	91.146	85.024	P/P

*1 The data preset in memory numbers 22 and 34 are the interface signals.
*2 Contact your local Sony sales office if you would like to input a signal not listed in the above chart.

Optional Accessories

Projector Lamp
LMP-P202
(for replacement)



LMP-P202

Projection Lenses
VPLL-CW10
(Short focal length converter lens)

VPLL-CT10
(Long focal length converter lens)

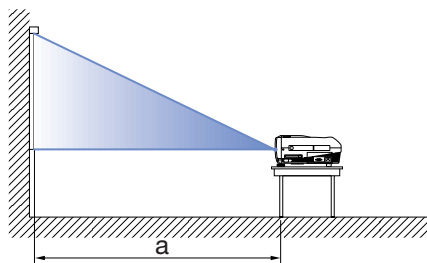
Suspension Support
PSS-610

Signal Cables
SMF-400
(HD D-sub 15-pin to 5 BNC, for RGB signal)

SMF-402
(HD D-sub 15-pin to phono x 3, for component signal)

SMF-410
(HD D-sub 15-pin to HD D-sub 15-pin, for RGB signal)

Throwing Distance

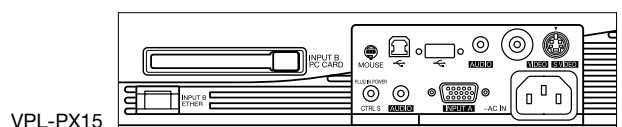


VPL-PX15/PX11

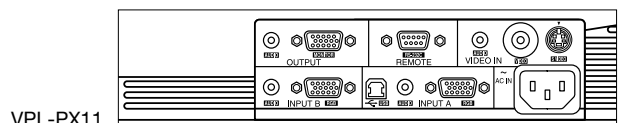
Screen size*	40-inch	60-inch	80-inch	100-inch	120-inch	150-inch	200-inch	250-inch	300-inch
a	min.	mm 1458	2217	2977	3736	4495	5635	7533	9432
	inches	57 1/2	87 1/2	117 3/8	147 3/8	177 1/4	221 3/4	296 1/2	371 3/8
b	min.	mm 1764	2675	3586	4497	5408	6774	9052	11329
	inches	69 3/8	105 1/4	141 3/8	177 1/4	213 1/8	266 5/8	356 3/8	446 1/8

* Viewable area, measured diagonally.

Connector Panel



VPL-PX15



VPL-PX11

Specifications

MODEL	VPL-PX15	VPL-PX11
OPTICAL		
Projection system	3 LCD panels, 1 lens projection system	
LCD panel	0.9-inch p-Si TFT LCD panel with Micro Lens Array 2,359,296 pixels (786,432 pixels x 3)	
Projection lens	1.3 times manual zoom lens, F1.7 to 2.1, f33.6 to 42 mm	
Lamp	200 W lamp	
Screen coverage	40 to 300 inches (viewable area, measured diagonally)	
Light output	2000 ANSI lumens**	
SIGNALS		
Color system	NTSC, PAL, SECAM, NTSC4.43, PAL-M, PAL-N	
Resolution	VIDEO: 750 TV lines, RGB: 1024 x 768 pixels	
Acceptable signals		
Computer	19-92kHz	
Scanning frequency (horizontal)	48-92Hz (up to 85Hz for SXGA 1280x1024 signals)	
Scanning frequency (vertical)	15kHz RGB/component 50/60Hz, composite video, Y/C video	
Video		
GENERAL		
Cabinet color	Silky Silver	
Speaker	Max. 0.5 W x 2 (stereo)	Max. 2 W x 2 (stereo)
Power requirements	AC 100 to 240 V, 50/60 Hz	
Power consumption	Max. 300 W, Standby 4.2 W	Max. 290 W, Standby 4.2 W
Operating temperature	0 to 35 °C (32 to 95 °F)	
Operating humidity	35 to 85%	
Dimensions	325 (W) x 110 (H) x 285 (D) mm (12 7/8 x 4 3/8 x 11 1/4 inches)**	
Mass	Approx. 5.3 kg (11 lb 11 oz)	Approx. 4.9 kg (10 lb 13 oz)
Heat dissipation	1023.9 BTU	989.6 BTU
INPUTS/OUTPUTS		
VIDEO IN	Phono type, 1.0 Vp-p ±2 dB, sync negative, 75 Ω Mini DIN 4-pin	
Y/C IN	1.0 Vp-p ±2 dB, sync negative, 75 Ω	
Y	Burst 0.286 Vp-p ±2 dB (NTSC), 75 Ω or 0.3 Vp-p ±2 dB (PAL), 75 Ω	
C	Stereo mini jack, 500 mV rms, impedance more than 47 kΩ	
AUDIO IN	HD D-sub 15-pin (female)	
INPUT A	Analog RGB/Component	
R/R-Y	0.7 Vp-p ±2 dB, positive, 75 Ω	
G	0.7 Vp-p ±2 dB, positive, 75 Ω	
G with Sync/Y	1.0 Vp-p ±2 dB, sync negative, 75 Ω	
B/B-Y	0.7 Vp-p ±2 dB, positive, 75 Ω	
SYNC/HD	1.0 to 5.0 Vp-p, high impedance positive/negative	
Composite sync	1.0 to 5.0 Vp-p, high impedance positive/negative	
Horizontal sync		
VD		
Vertical sync	1.0 to 5.0 Vp-p, high impedance positive/negative	
AUDIO IN	Stereo mini jack, 500 mV rms, impedance more than 47 kΩ	
INPUT B	Analog RGB	
R	HD D-sub 15-pin (female)	
G	0.7 Vp-p ±2 dB, positive, 75 Ω	
G with Sync	0.7 Vp-p ±2 dB, positive, 75 Ω	
B	1.0 Vp-p ±2 dB, sync negative, 75 Ω	
SYNC/HD	0.7 Vp-p ±2 dB, positive, 75 Ω	
Composite sync	1.0 to 5.0 Vp-p, high impedance positive/negative	
Horizontal sync	1.0 to 5.0 Vp-p, high impedance positive/negative	
VD		
Vertical sync	1.0 to 5.0 Vp-p, high impedance positive/negative	
AUDIO IN	Stereo mini jack, 500 mV rms, impedance more than 47 kΩ	
ETHER	10BASE-T/100BASE-TX	
PC Card slot	PC Card slot Type II	
USB	UP (B type female) x 1, Down(A type female) x 1	UP (B type female) x 1 (INPUT A)
OUTPUT	Analog RGB/Component	
R/R-Y,G/Y,B/B-Y	HD D-sub 15-pin (female)	
SYNC/HD,VD	Gain unity, 75 Ω	
AUDIO(variable out)	4.0 Vp-p(open), 1.0 Vp-p, 75 Ω	
REMOTE:RS-232C	Stereo mini jack, max 1 Vrms, When an output signal is 500 mVrms, impedance less than 5 khms	
SAFETY REGULATIONS	UL, cUL, DHHS, DNHW, DENAN, FCC class A, NEMKO, CE (LVD, EMC), C-Tick, VCCI, JEITA	
SUPPLIED ACCESSORIES	Remote Commander (VPL-PX15** and VPL-PX11 have their dedicated remote control units respectively.) Signal Cable SMF-410: HD D-sub 15-pin to D-sub 15-pin, USB Cable: A type to B type, USB Application Software Projector Station (CD ROM), AA size Battery (2) Air Filter (for replacement), AC Power Cord, Operation Manual, Operation Manual for Networking (VPL-PX15 only), Installation Manual for Dealers, Specified/recommended PC Card/Wireless LAN Access Point List (VPL-PX15 only), Quick Guide	

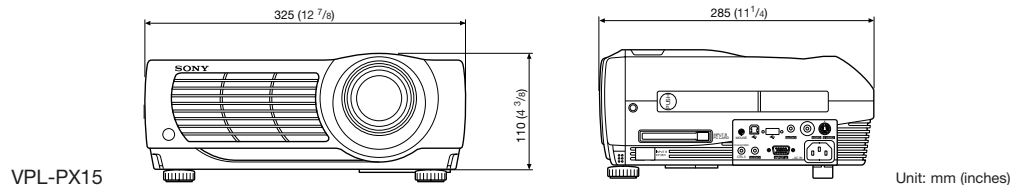
** ANSI lumens is a measuring method of the American National Standards Institute IT7.228.

** Excluding protruding parts.

** Laser Type: Class II Wavelength: 645 nm Output: 1mW



Dimensions



Distributed by

New Zealand:
Ph: 0800 7669 776
Or email us at sonypro@sony.co.nz
Sony New Zealand Limited
Akoranga Business Park
Northcote Auckland
Ph: 0800 7669 776
Fax: (09) 488 0503

Australia:
Ph: 1800 017 669
Or Visit www.sony.com.au/projectors
Sony Australia Limited
33-39 Talavera Road
North Ryde NSW 2113
Ph: 1800 017 669
Fax: 1800 117 669

©2002 Sony Corporation. All rights reserved.
Reproduction in whole or in part without permission is prohibited.
Features and specifications are subject to change without notice.
All non-metric weights and measures are approximate.
Sony is a registered trademark of Sony Corporation.
Microsoft, Windows and PowerPoint are registered trademarks of Microsoft Corporation.
Netscape is a registered trademark of Netscape Communications Corporation.